



LTC Series

Single Head Miniature Liquid Diaphragm Pump

English/Metric

General Specifications

Pressure Range	0 – 30 psig/	207 KPa
Vacuum Range	0 – 20 in Hg/	68 KPa
Max. Unrestricted Flow*	650 mL/min	
Media	Most Liquids and Gases	

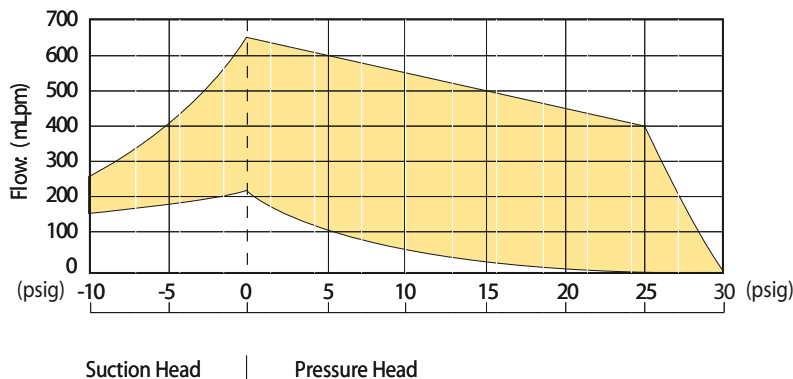
DESCRIPTION

LTC Series Liquid Pumps are offered in both brush and brushless DC motor drives that can be configured for your specific performance requirements. These pumps are designed to handle a wide range of liquid and gas media.

DYNAMIC BENEFITS

- **Fluid-Blok™ Advanced Sealing Technology**:** Redundant sealing techniques eliminate leaks.
- **Self-Priming/Dry Running:** Monolithic diaphragm design allows for maximum suction/priming and continuous dry operation.
- **Longevity:** Unique brushless DC motor design and advanced proprietary diaphragm elastomer gives the highest benchmark for service-free life.
- **Low Power Consumption:** Advanced flow path and efficient valve system design** allows for maximum flow with low power consumption.
- **Port Design:** Port design allows for top or bottom face seal and is molded for 1/4-28 UNF threaded fittings, as well as four head configurations.
- **Chemical Resistant:** Structured to be inert to a variety of media with selected wetted components.
- **Lightweight, Compact Size:** Compact configuration allowing designers to minimize system weight and space requirements.
- **Flexible Mounting Options:** Maximizes mounting flexibility by offering several mounting options.
- **FDA-Approved Materials:** Hargraves pumps and compressors are commonly used in FDA-approved systems.

OVERALL PERFORMANCE RANGE*



* Above performance ranges illustrate overall performance for all LTC pumps handling water at room temperature. Performance varies depending on barometric pressure, media temperature, density, and viscosity.

** patent pending

LTC Series

MOTOR OPTIONS

- A. Brushless
 - B. Brush
- All available in 6, 12 or 24 VDC*

The maximum average operating current range is 390mA to 1.1A. Current will vary depending on required motor, voltage, pressure, flow and vacuum.

* Other voltages available upon request.

OPERATING ENVIRONMENT

Temperature	Humidity	Position	Media
5° – 50° C	0 – 95% RH	Any	Most liquids and gases

PUMP ACCESSORIES

Fittings: Stainless Steel Push-To-Lock for 1/4" O.D. tubing
Mounting: **EZ MOUNT** Vibration Isolation Mounting System

FEATURES

Ports are designed for top or bottom face seal, utilizing industry standard 1/4-28 UNF threaded fittings.

Head Configuration can be assembled in any one of four configurations; configuration 3 standard (see diagram below)

Mounting Options:

Standard mounting holes are drilled to accommodate #6-20 self-tapping screws. Other options available.

The **EZ MOUNT** is designed for the LTC Series of pumps.

WETTED MATERIALS

Diaphragm: EPDM, AEPDM*, Fluorocarbon, Teflon/EPDM Laminate

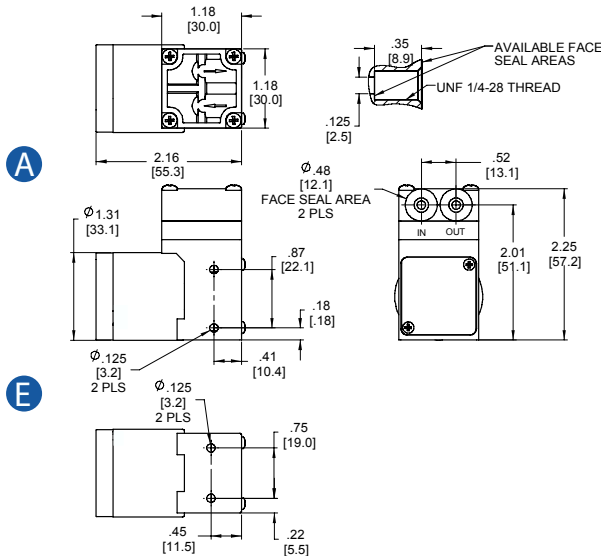
Valves: EPDM, AEPDM*, Perfluoro, Fluorocarbon

Pump Head: Vectra (Liquid Crystal Polymer)

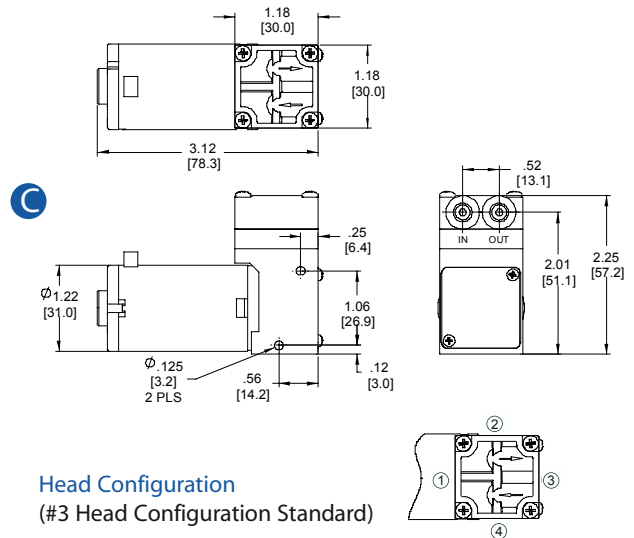
* AEDPM is an advanced proprietary elastomer developed by Hargraves to provide greater longevity than traditional diaphragm materials.

OUTLINE DIAGRAMS - OVERALL DIMENSIONS AND MOUNTING OPTIONS

Brushless Motor
(Weight - 5.0 oz)



Brush Motor
(Weight - 7.0 oz)



Head Configuration
(#3 Head Configuration Standard)

Mounting hole options seen in views: A, C, and E. Mounting option E standard. For additional mounting options consult the factory.



127 Speedway Drive Mooresville, North Carolina 28117
 Telephone 704-662-3500 Fax 704-662-8744
www.hargravescfluidics.com