

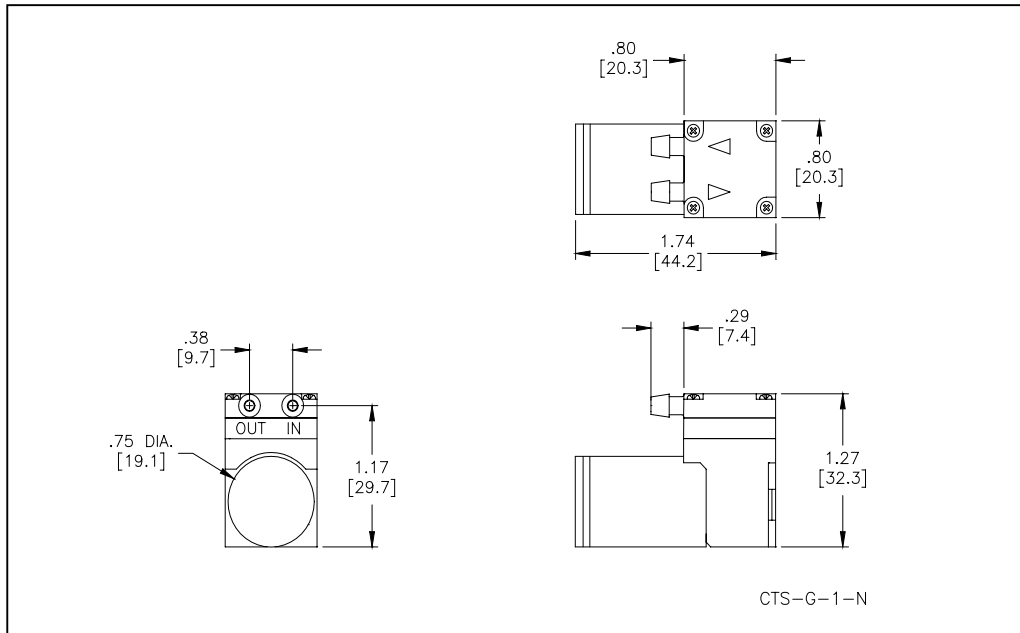


HARGRAVES

Mooresville, North Carolina 28117  
 T: 704-662-3500 F: 704-662-8744  
 www.hargraveshfluidics.com

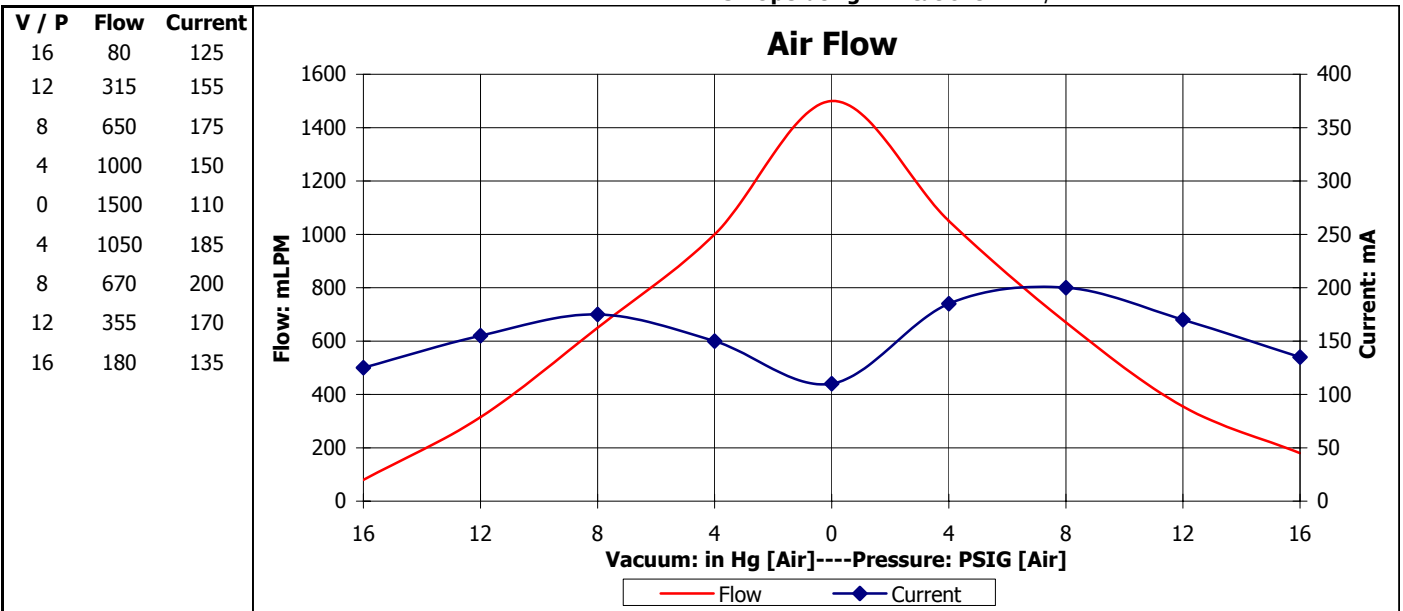
Part No.: **E164-11-060**  
 Model No.: **A.1F15N1.G06VDC**  
 Description: **CTS Diaphragm Pump,  
 Coreless Motor**

**Dimensional Layout:**



**Specifications:**

- |                             |                        |                   |                       |                                  |  |           |
|-----------------------------|------------------------|-------------------|-----------------------|----------------------------------|--|-----------|
| <b>1. Wetted Materials:</b> | Pump Head:             | Polysulfone       | <b>3. Electrical:</b> | Motor:                           | Coreless Dual Bearing                    |           |
|                             | Retainer Washer:       | Polysulfone       |                       | Operating Voltage:               | 6.0 VDC                                  |           |
|                             | Retainer Screw:        | 18-8 Stainless    |                       | In-rush Current:                 | 5 x Operating Current<br>for up to 50 ms |           |
|                             | Valves:                | EPDM [65]         |                       | Recommended Fusing:              | Slow Blow @ 2 x<br>Operating Current     |           |
|                             | Diaphragm:             | AEPDM [F80]       |                       |                                  |  |           |
| <b>2. Performance:</b>      |                        | <u>Continuous</u> | <u>Maximum</u>        | <b>4. Other:</b>                 | Temperature Range:                       | 5 - 50° C |
|                             | - Pressure: PSIG [Air] | 17.5              | 17.5                  |                                  | Free Flow RPM:                           | 6950      |
|                             | - Vacuum: in Hg [Air]  | 17.0              | 17.0                  |                                  | Eccentric:                               | E350      |
|                             |                        |                   |                       | <b>5. Operating Limitations:</b> | N/A                                      |           |



The above graph denotes nominal performance at 800' above sea level, 24°C, and at the specified voltage.

ST