

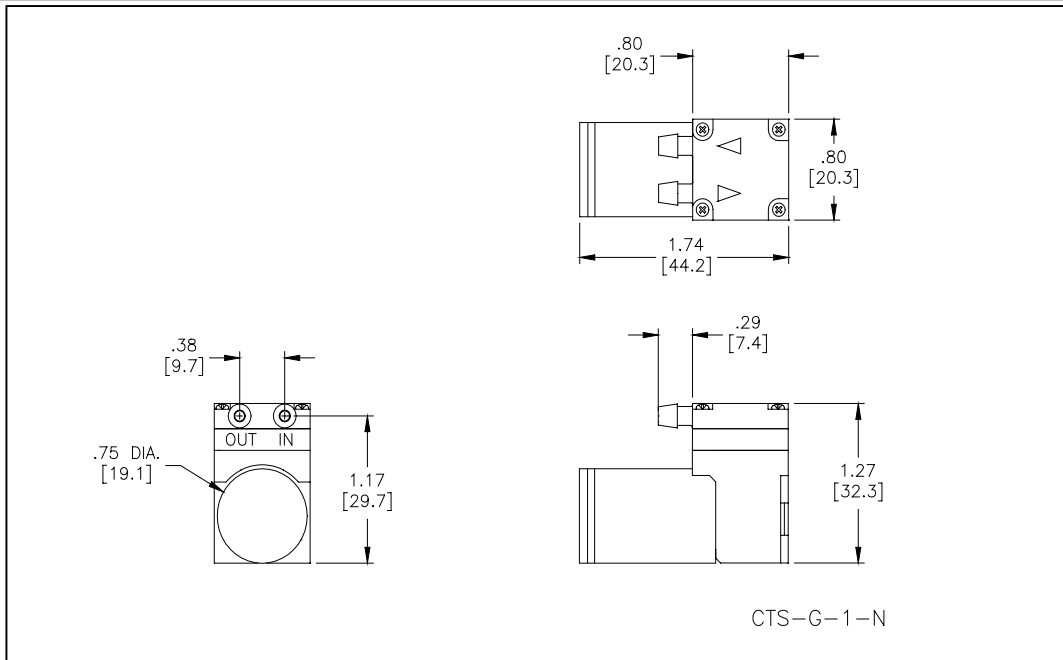


HARGRAVES

Moorestville, North Carolina 28117
 T: 704-662-3500 F: 704-662-8744
 www.hargravestfluidics.com

Part No.: **E134-11-050**
 Model No.: **A.1F07N1.G05VDC**
 Description: **CTS Diaphragm Pump, Coreless Motor**

Dimensional Layout:



Specifications:

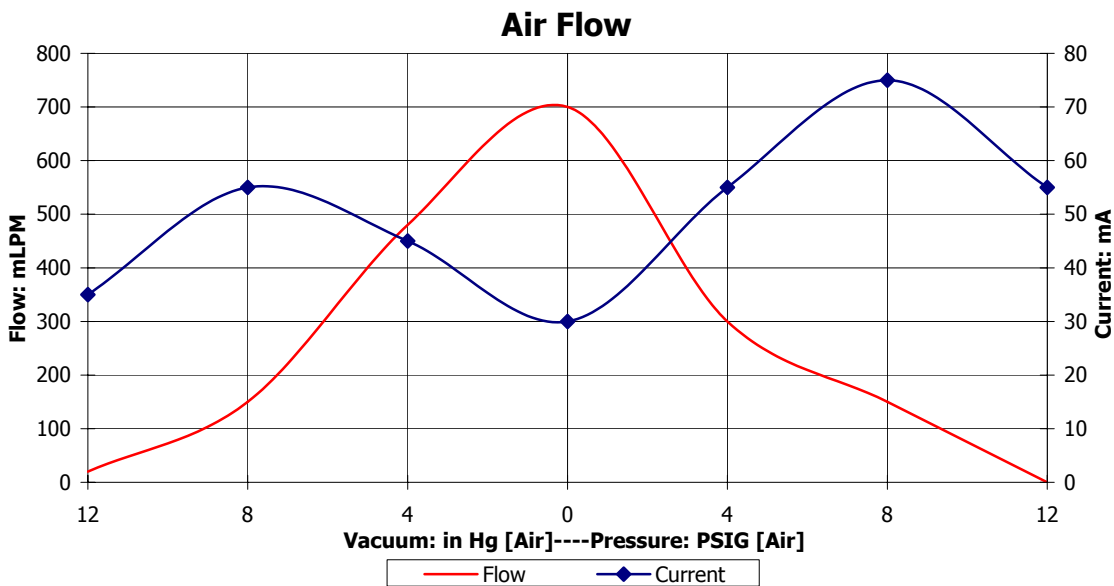
1. Wetted Materials:	Pump Head:	Polysulfone	3. Electrical:	Motor:	Coreless Dual Bearing
	Retainer Washer:	Polysulfone		Operating Voltage:	5.0 VDC
	Retainer Screw:	18-8 Stainless		In-rush Current:	5 x Operating Current for up to 50 ms
	Valves:	EPDM [65]		Recommended Fusing:	Slow Blow @ 2 x Operating Current
	Diaphragm:	AEPDM [F80]			

2. Performance:		<u>Continuous</u>	<u>Maximum</u>
	- Pressure: PSIG [Air]	8.0	14.0
	- Vacuum: in Hg [Air]	8.0	14.0

4. Other:	Temperature Range:	5 - 50° C
	Free Flow RPM:	2800
	Eccentric:	E350

5. Operating Limitations: N/A

V / P	Flow	Current
12	20	35
8	150	55
4	480	45
0	700	30
4	300	55
8	150	75
12	0	55



The above graph denotes nominal performance at 800' above sea level, 24°C, and at the specified voltage.

ST