

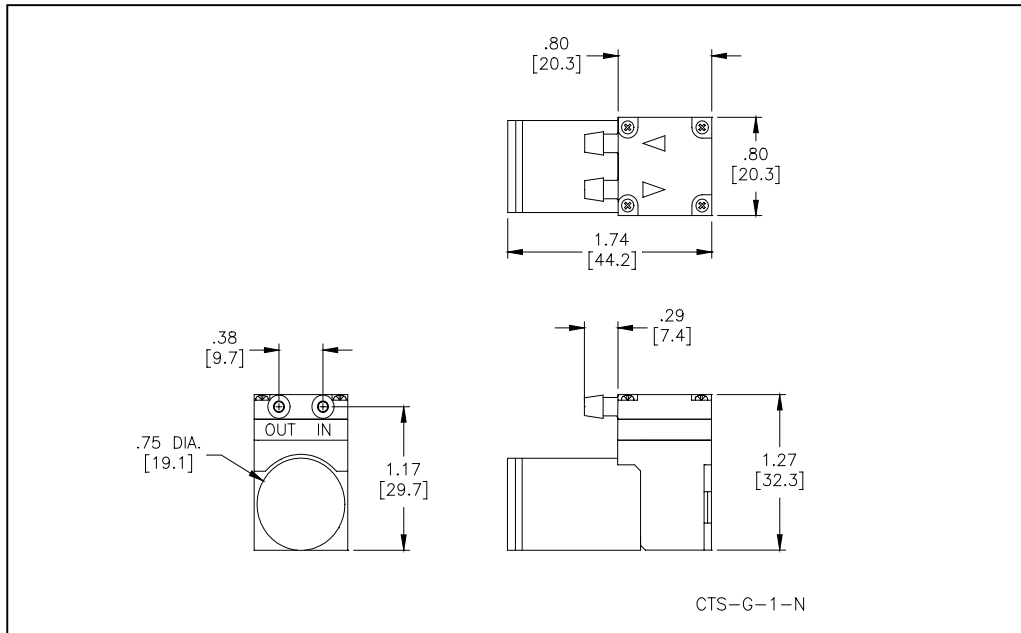


HARGRAVES

Mooreville, North Carolina 28117
 T: 704-662-3500 F: 704-662-8744
 www.hargraveshfluidics.com

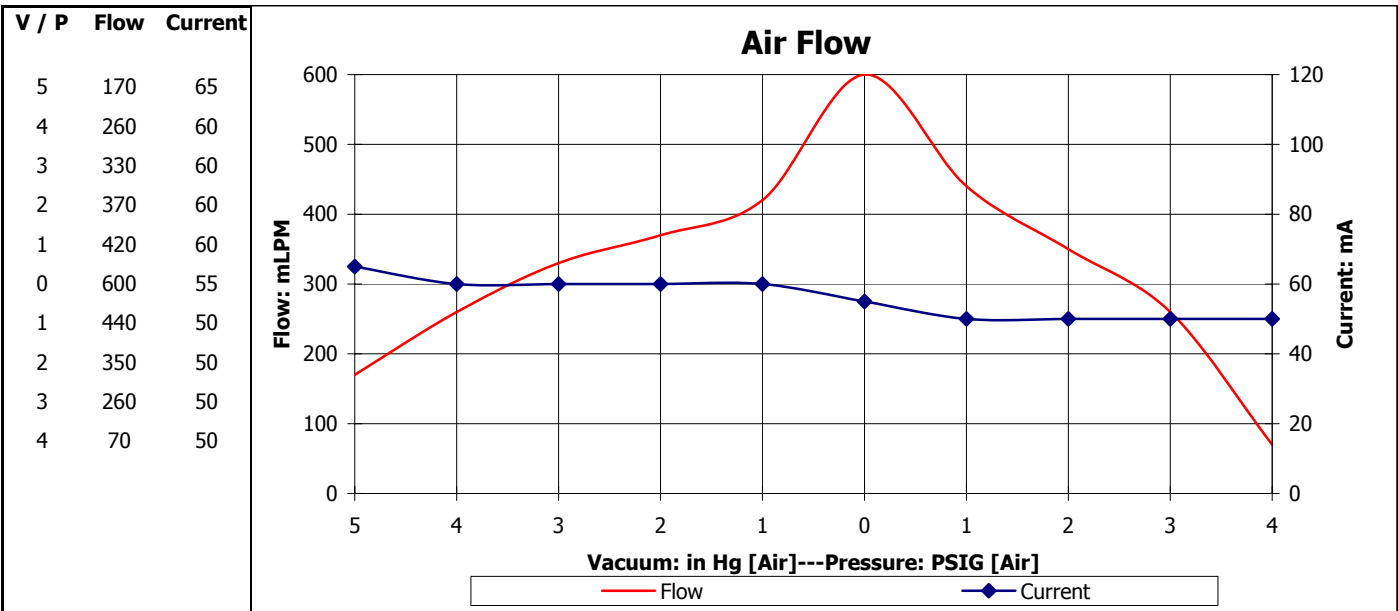
Part No.: **E191-11-120**
 Model No.: **A.1F06N1.G12VDC**
 Description: **CTS Diaphragm Pump,
 Coreless Motor**

Dimensional Layout:



Specifications:

1. Wetted Materials:	Pump Head:	Polysulfone	3. Electrical:	Motor:	Coreless Dual Bearing
	Retainer Washer:	Polysulfone		Operating Voltage:	12 VDC
2. Performance:	Retainer Screw:	18-8 Stainless	In-rush Current:	5 x Operating current for up to 50 ms	
	Valves:	EPDM [65]	Recommended Fusing:	Slow Blow @ 2 x Operating Current	
	Diaphragm:	AEPDM [F80]	Temperature Range:	5 - 50° C	
			Free Flow RPM:	7400	
			Eccentric:	E130	
	<u>Continuous</u>	<u>Maximum</u>	4. Other:		
- Vacuum: in Hg [Air]	7.5	7.5			
- Pressure: PSIG [Air]	5.0	5.0			



The above graph denotes nominal performance at 800' above sea level, 24°C, and at the specified voltage.

PR