

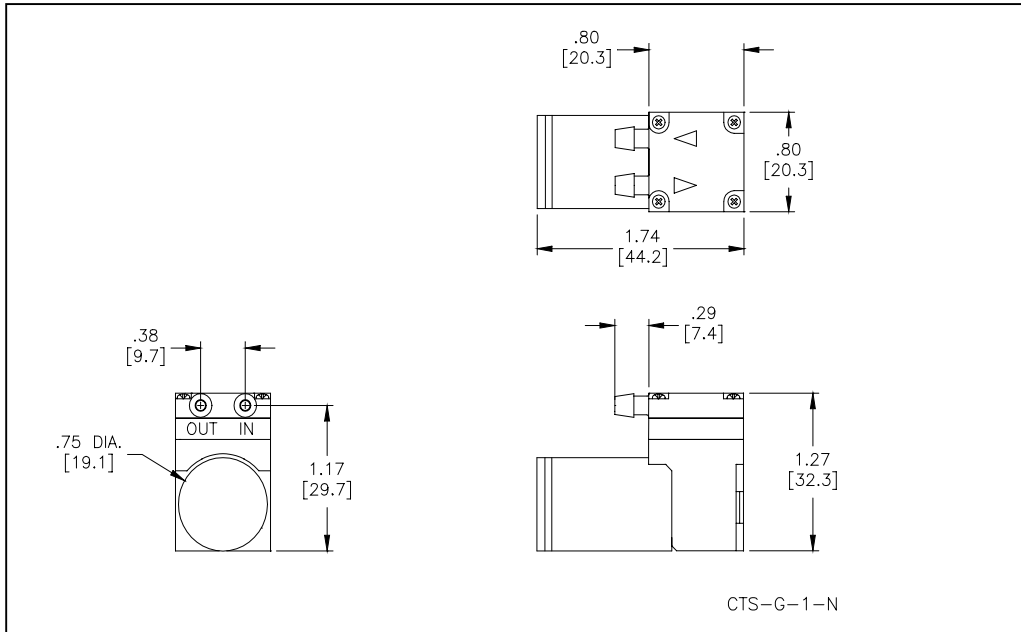


HARGRAVES

Moorestville, North Carolina 28117  
T: 704-662-3500 F: 704-662-8744  
www.hargravestfluidics.com

Part No.: **E191-11-060**  
Model No.: **A.1F03N1.G06VDC**  
Description: **CTS Diaphragm Pump,  
Coreless Motor**

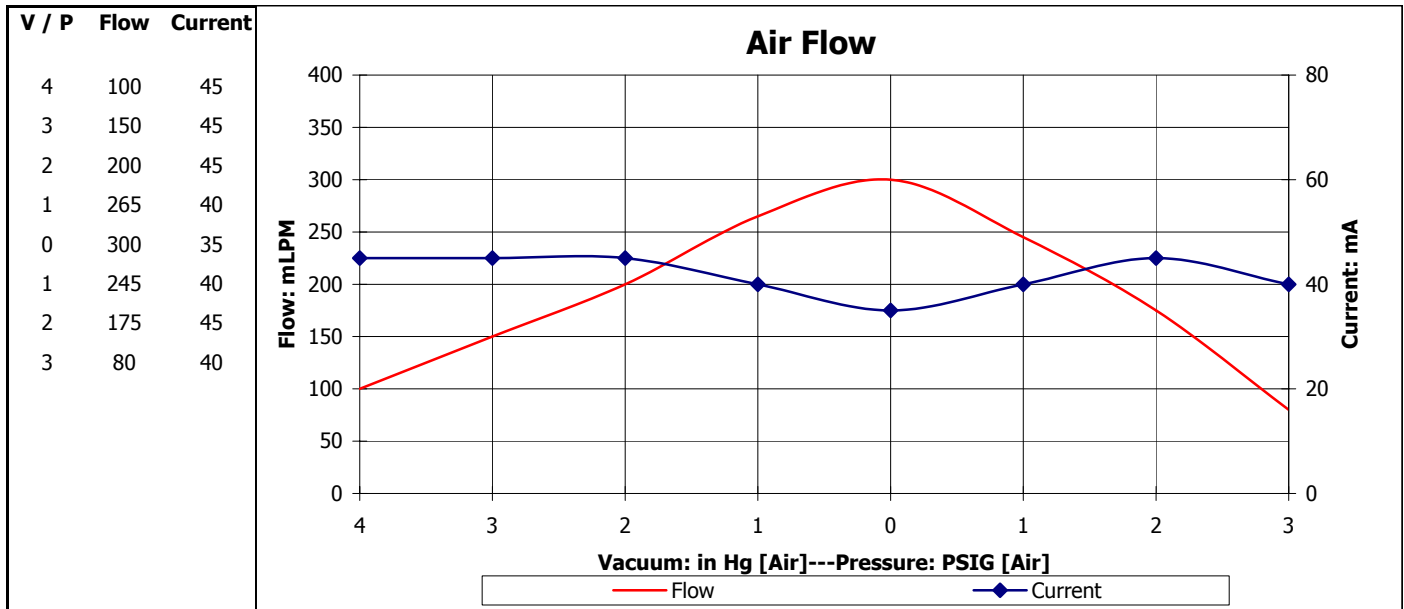
### Dimensional Layout:



### Specifications:

<b>1. Wetted Materials:</b>	Pump Head:	Polysulfone	<b>3. Electrical:</b>	Motor:	Coreless Dual Bearing
	Retainer Washer:	Polysulfone		Operating Voltage:	6 VDC
<b>2. Performance:</b>	Retainer Screw:	18-8 Stainless	In-rush Current:	5 x Operating current	for up to 50 ms
	Valves:	EPDM [65]	Recommended Fusing:	Slow Blow @ 2 x	Operating Current
	Diaphragm:	AEPDM [F80]	Temperature Range:	5 - 50° C	
			Free Flow RPM:	3500	
			Eccentric:	E130	
	<u>Continuous</u>	<u>Maximum</u>	<b>4. Other:</b>		
- Vacuum: in Hg [Air]	7.0	7.0			
- Pressure: PSIG [Air]	5.0	5.0			

### 5. Operating Limitations:



The above graph denotes nominal performance at 800' above sea level, 24°C, and at the specified voltage.

PR