

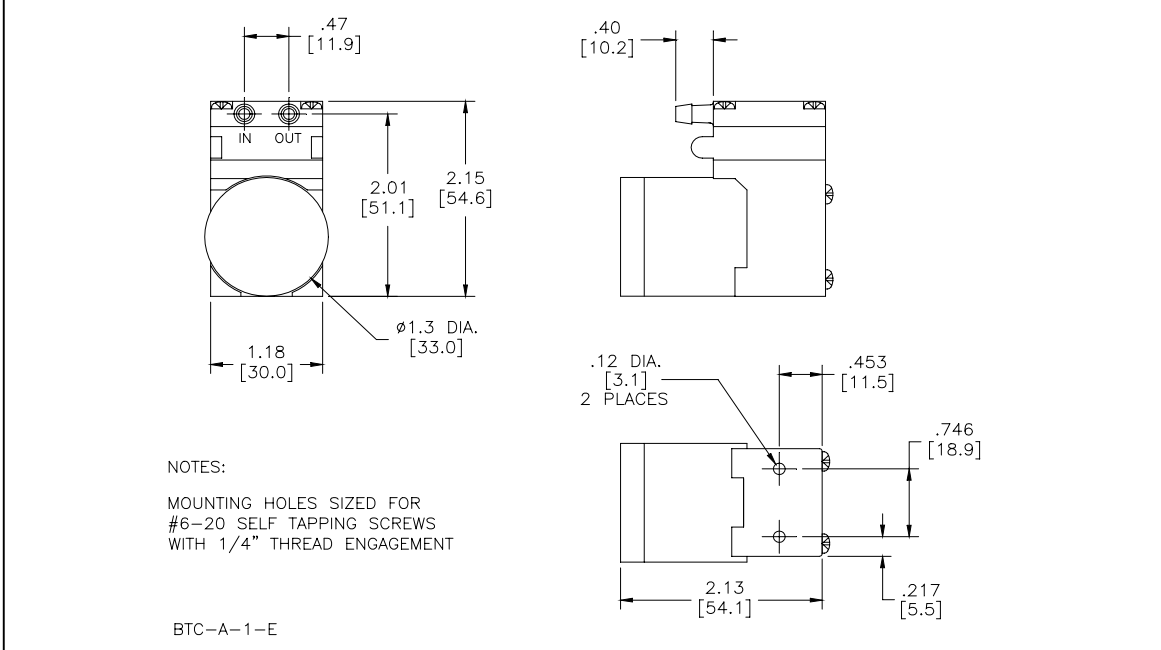


HARGRAVES

Mooresville, North Carolina 28117
 T: 704-662-3500 F: 704-662-8744
 www.hargravestfluidics.com

Part No.: **C117H-13**
 Model No.: **B.1C60E1.A24VDC**
 Description: **BTC Diaphragm Pump, Brushless Motor**

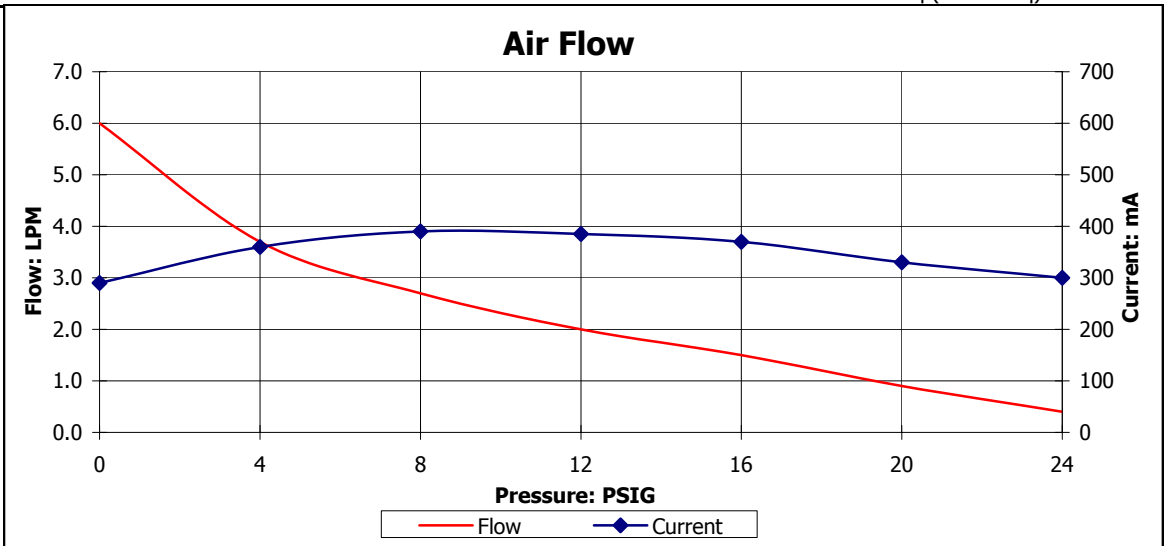
Dimensional Layout:



Specifications:

- | | | | | | | |
|-----------------------------|--------------------|-------------------|-----------------------|-----------------------------------|--|-----------|
| 1. Wetted Materials: | Pump Head: | Vectra [LCP] | 3. Electrical: | Motor: | Brushless Dual Bearing | |
| | Retainer Washer: | 2024 Alum [700] | | Operating Voltage: | 24.0 vdc | |
| | Retainer Screw: | 316 Stainless | | In-rush Current: | 5 x Operating Current for up to 50 ms | |
| | Valves: | EPDM [Q55] | | Recommended Fusing: | Slow Blow @ 2 x Operating Current | |
| | Diaphragm: | AEPDM [T80] | | | | |
| | Gasket: | EPDM [65] | | | | |
| 2. Performance: | | <u>Continuous</u> | <u>Maximum</u> | 4. Other: | Temperature Range: | 5 - 50° C |
| | - Pressure [PSIG]: | 8.0 | 24.0 | | Free Flow RPM: | 3900 |
| | | | | | Eccentric: | A900 |
| | | | | 5. Operating Limitations: | Not configured for vacuum operation | |
| | | | | 6. Recommended Filtration: | 40 Micron media w/ a minimum surface area of .39" Sq (252mmSq) | |

Press	Flow	Current
0	6.0	290
4	3.7	360
8	2.7	390
12	2.0	385
16	1.5	370
20	0.9	330
24	0.4	300



The above graph denotes nominal performance at 800' above sea level, at 24 degrees C and at the specified voltage.

ST