

BTC-IIS Series Mini Pumps (air/gas)

Up to 11 LPM Free Flow



BTC-IIS slotless motor shown

Typical Applications

- Patient Monitoring
- Compression Therapy
- Hemodialysis
- Peritoneal dialysis
- Respiratory care
- Wound Therapy

BTC-IIS Single Body Dual Head Miniature Diaphragm Pumps and Compressors are a series of brush and brushless DC motor driven pumps which are tailored to meet the specific performance requirements of your applications. These pumps are designed to handle both gases and liquids.

Features

- **Proportional Flow Control:**
Three-wire motor available for external pulse width modulation.
- **Longevity:**
The BTC-IIS Series pump sets the highest benchmark for service-free performance with our unique brushless DC motor design and advanced proprietary diaphragm elastomer.
- **Light Weight, Compact Size:**
The BTC-IIS Series pump design has a unique compact configuration allowing designers to minimize system weight and allotted space requirement for pumps and compressors.
- **Versatile Head Configuration:**
Each pump head can be configured to operate independently for a combination of pressure, vacuum and liquid applications. The heads can be configured in series or parallel to increase vacuum, pressure or flow performance.
- **Flexible Mounting Options:**
The BTC-IIS maximizes mounting flexibility by offering several ways to mount the pump, as well as four possible port orientations.
- **Contamination-Free:**
Parker takes the necessary steps in manufacturing to assure that our 100% oil-free pump and compressor designs maintain the purity of your system. Parker pumps and compressors are commonly used in FDA-approved systems.

Performance Data

Physical Properties

Operating Environment:
41 to 158°F* (5 to 70°C*)
Media:
Most Gases and Liquids
Humidity:
0 – 95% RH
Wetted Material:
EPDM, AEPDM, Fluorocarbon, Teflon/EPDM Laminate
Valves:
EPDM, AEPDM, Perfluoro, Fluorocarbon
Pump Head:
Vectra (Liquid Crystal Polymer)

Electrical

Motor Type (DC):
Brush Dual Ball Bearings Brushless Dual Ball Bearings
Nominal Motor Voltages:
6, 12, 24 VDC Other voltages available upon request
Current Range:
200 mA - 1400 mA* *Dependent on motor type, voltage, pressure/vacuum and flow requirement.

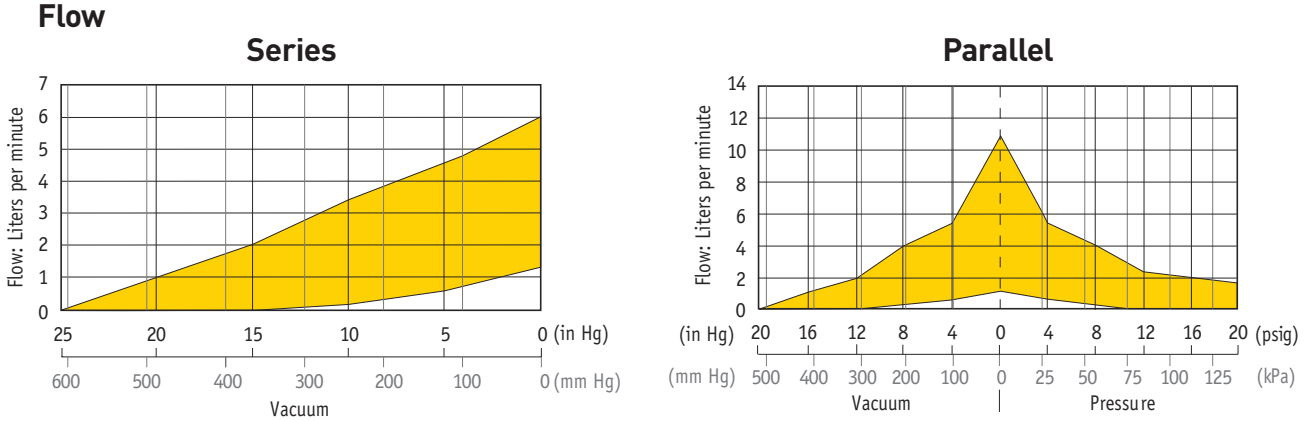
Pneumatic

Head Configuration:
Dual
Max Unrestricted Flow:
6 LPM (Series) 11 LPM (Parallel)
Pressure Range*:
0 - 28 psig (193 kPa) Parallel
Vacuum Range*:
0 - 25 in Hg (635 mmHg) (Series) 0 - 20 in Hg (580mmHg) (Parallel) * Extended pressure and vacuum capabilities available upon request.

BTC-IIS Series

Mini Pumps (air/gas)

Miniature Diaphragm Pump and Compressor

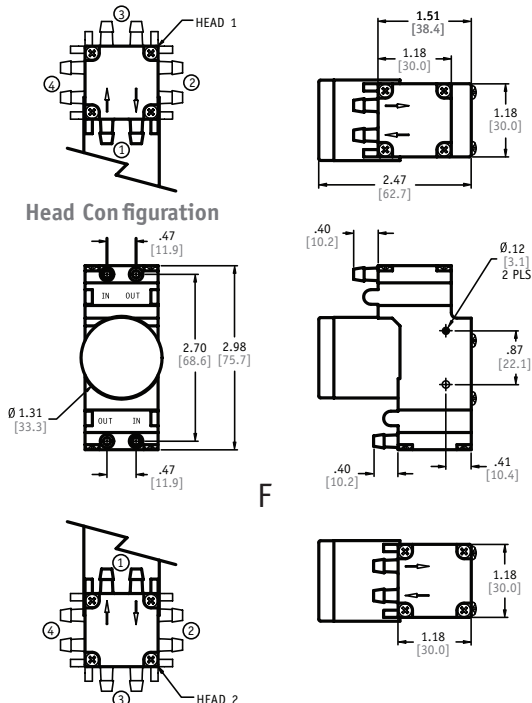


The above performance graph illustrates the overall performance of the BTC-IIS handling air at 800 feet (244 m) above sea level at 75° F (24°). Performance will vary depending on barometric pressure and media temperature. Consult factory with your specific requirements.

Dimensions

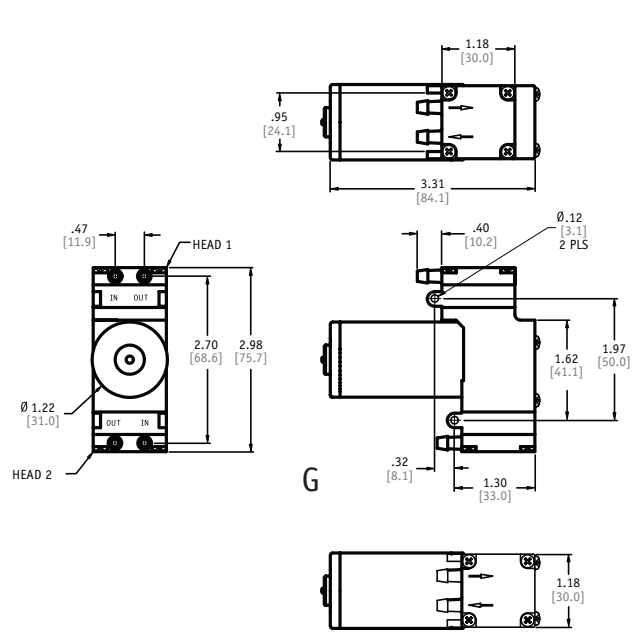
Brushless Motor

(Pump Mass - 6.0 oz_m [170 gms])



Brush Motor

(Pump Mass - 8.0 oz_m [227 gms])



PPF MDP - 002/US Sept 2009

For more information call 1.800.525.2857 or email ppfinfo@parker.com
 Visit www.parker.com/precisionfluidics

