

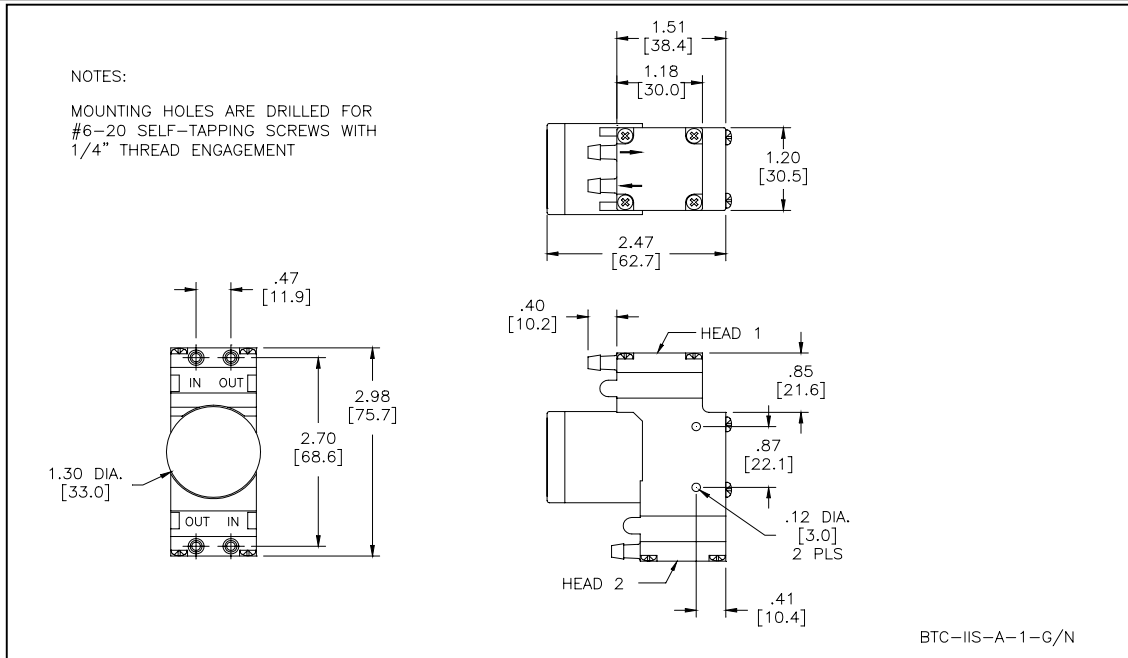


HARGRAVES

Mooresville, North Carolina 28117  
T: 704-662-3500 F: 704-662-8744  
www.hargravestfluidics.com

Part No.: **D774-11**  
Model No.: **C.1F30G1.1F30N1.A24VDC**  
Description: **BTC-IIS Diaphragm Pump, Brushless Motor**

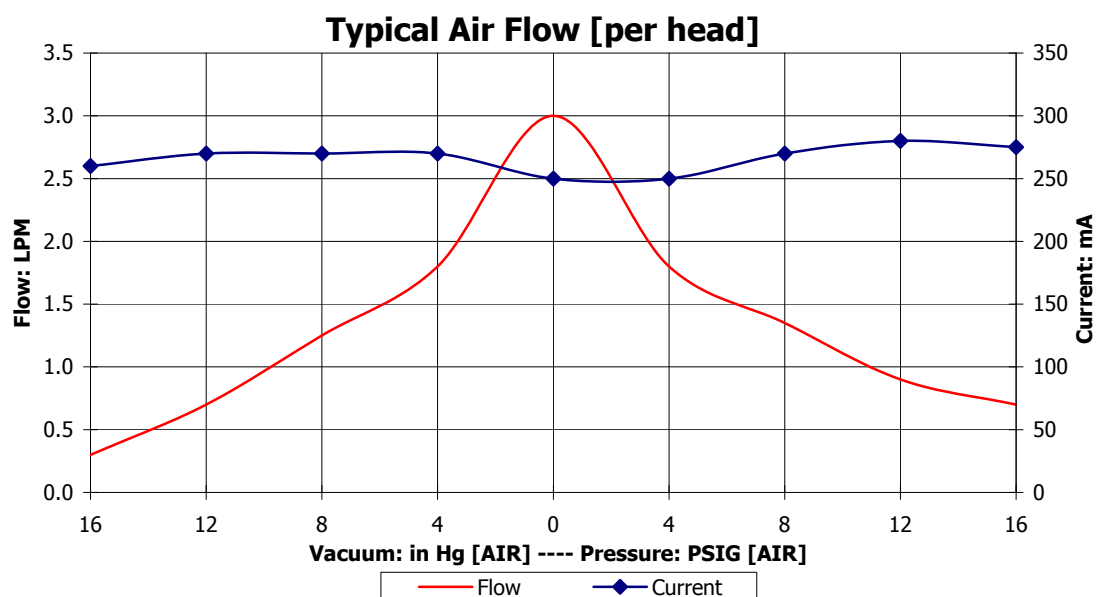
### Dimensional Layout:



### Specifications:

- |                               |                              |                     |                       |                                  |                                       |                |      |
|-------------------------------|------------------------------|---------------------|-----------------------|----------------------------------|---------------------------------------|----------------|------|
| <b>1. Wetted Materials:</b>   | Pump Head:                   | Vectra [LCP]        | <b>3. Electrical:</b> | Motor:                           | Brushless, Dual Bearing               |                |      |
|                               | Retainer Washer:             | 2024 Alum [800/800] |                       | Operating Voltage:               | 24.0 VDC                              |                |      |
|                               | Retainer Screw:              | 316 Stainless       |                       | In-rush Current:                 | 5 x Operating Current for up to 50 ms |                |      |
|                               | Valves:                      | EPDM [Q55/Q55]      |                       | Recommended Fusing:              | Slow Blow @ 2 x Operating Current     |                |      |
|                               | Diaphragm:                   | AEPDM [F80/F80]     |                       |                                  |                                       |                |      |
|                               | Gasket:                      | EPDM [65/65]        |                       |                                  |                                       |                |      |
| <b>2. Performance:</b>        |                              | <u>Continuous</u>   | <u>Maximum</u>        | <b>4. Other:</b>                 | Temperature Range:                    | 5 - 50° C      |      |
|                               | <b>- Vacuum: in Hg [AIR]</b> | Head 1:             | 16.0                  |                                  | 17.0                                  | Free Flow RPM: | 3300 |
|                               |                              | Head 2:             | 16.0                  |                                  | 17.0                                  | Eccentric:     | A430 |
| <b>- Pressure: PSIG [AIR]</b> | Head 1:                      | 16.0                | 19.0                  | <b>5. Operating Limitations:</b> | Not configured for series operation   |                |      |
|                               | Head 2:                      | 16.0                | 19.0                  |                                  |                                       |                |      |

V / P	Flow	Current
16	0.3	260
12	0.7	270
8	1.3	270
4	1.8	270
0	3.0	250
4	1.8	250
8	1.4	270
12	0.9	280
16	0.7	275



The above graph denotes nominal performance at 800' above sea level, 24°C, and at the specified voltage.

ST