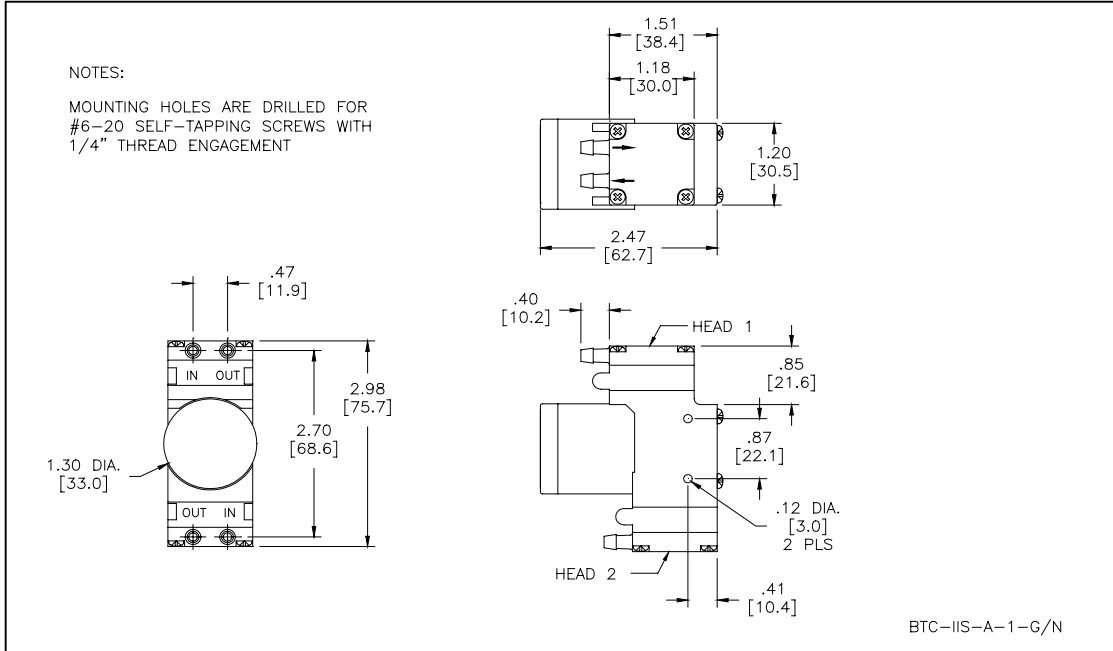
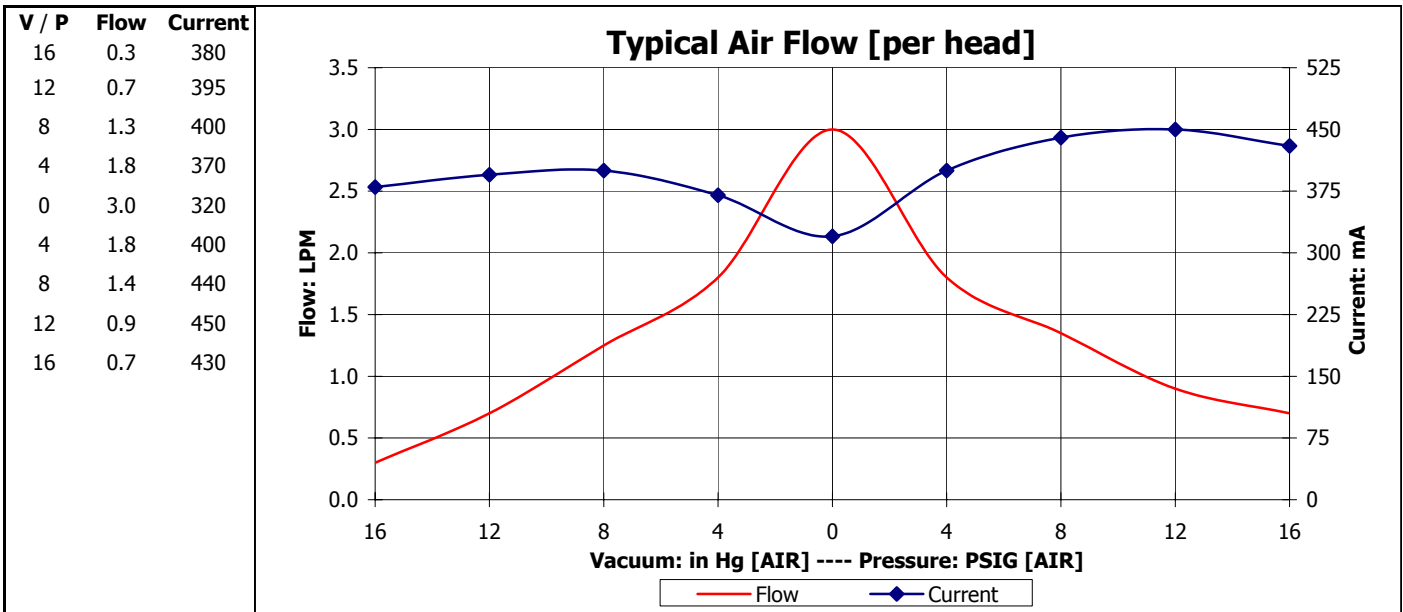


Dimensional Layout:



Specifications:

- | | | | | | | | |
|-----------------------------|------------------------|---------------------|-----------------------|---------------------|---------------------------------------|-------------------------------------|------|
| 1. Wetted Materials: | Pump Head: | Vectra [LCP] | 3. Electrical: | Motor: | Brushless, Dual Bearing | | |
| | Retainer Washer: | 2024 Alum [800/800] | | Operating Voltage: | 12.0 VDC | | |
| | Retainer Screw: | 316 Stainless | | In-rush Current: | 5 x Operating Current for up to 50 ms | | |
| | Valves: | EPDM [Q55/Q55] | | Recommended Fusing: | Slow Blow @ 2 x Operating Current | | |
| | Diaphragm: | AEPDM [F80/F80] | | | | | |
| | Gasket: | EPDM [65/65] | | | | | |
| 2. Performance: | | <u>Continuous</u> | <u>Maximum</u> | 4. Other: | Temperature Range: | 5 - 50° C | |
| | - Vacuum: in Hg [AIR] | Head 1: | 16.0 | | 17.0 | Free Flow RPM: | 3300 |
| | | Head 2: | 16.0 | | 17.0 | Eccentric: | A430 |
| | - Pressure: PSIG [AIR] | Head 1: | 16.0 | 19.0 | 5. Operating Limitations: | Not configured for series operation | |
| | | Head 2: | 16.0 | 19.0 | | | |



The above graph denotes nominal performance at 800' above sea level, 24°C, and at the specified voltage.

ST