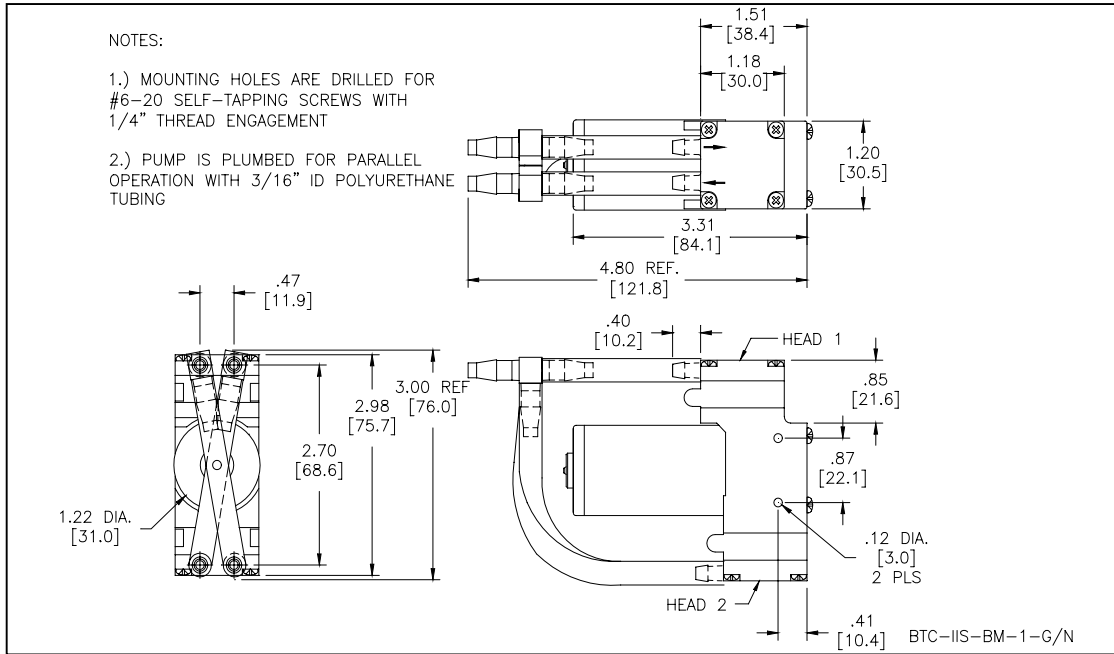
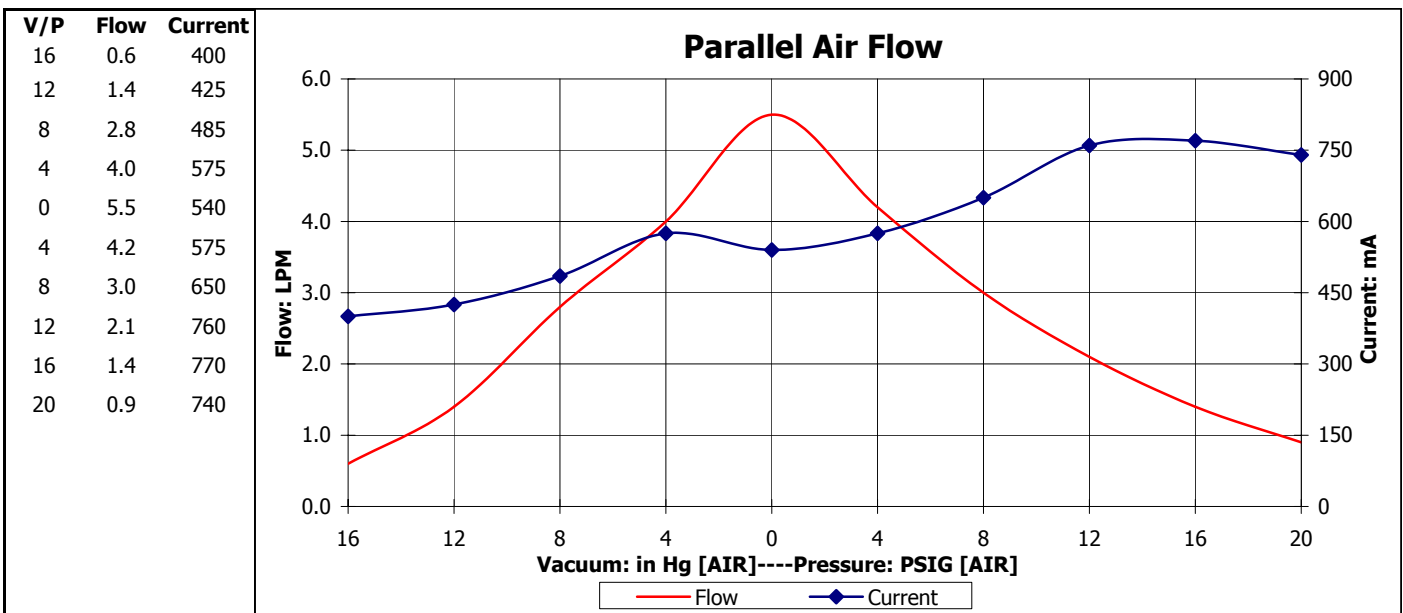


Dimensional Layout:



Specifications:

1. Wetted Materials:	Pump Head:	Vectra [LCP]	3. Electrical:	Motor:	Brush Dual Bearing	
	Retainer Washer:	2024 Alum [800/800]		Operating Voltage:	12.0 VDC	
	Retainer Screw:	316 Stainless		In-rush Current:	5 x Operating Current for up to 50 ms	
	Valves:	EPDM [Q80/Q80]		Recommended Fusing:	Slow Blow @ 2 x Operating Current	
	Diaphragm:	AEPDM [F80/F80]				
Gasket:	EPDM [65]					
2. Performance:		<u>Continuous</u>	<u>Maximum</u>	4. Other:	Temperature Range:	5 - 50° C
	- Vacuum: in Hg [AIR]	Parallel:	18.0		18.0	Free Flow RPM:
					Eccentric:	C475/C475
- Pressure: PSIG [AIR]	Parallel:	22.0	22.0	5. Operating Limitations:	Not configured for series operation	



The above graph denotes nominal performance at 800' above sea level, 24°C, and at the specified voltage.

ST