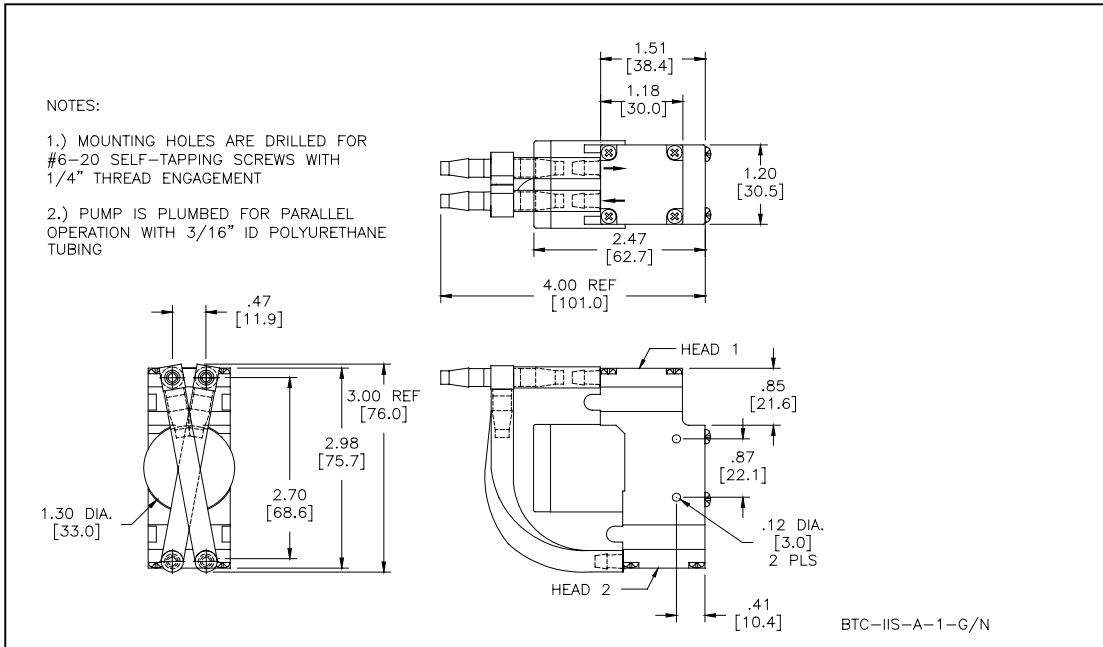




Moorestville, North Carolina 28117
 T: 704-662-3500 F: 704-662-8744
 www.hargravestfluidics.com

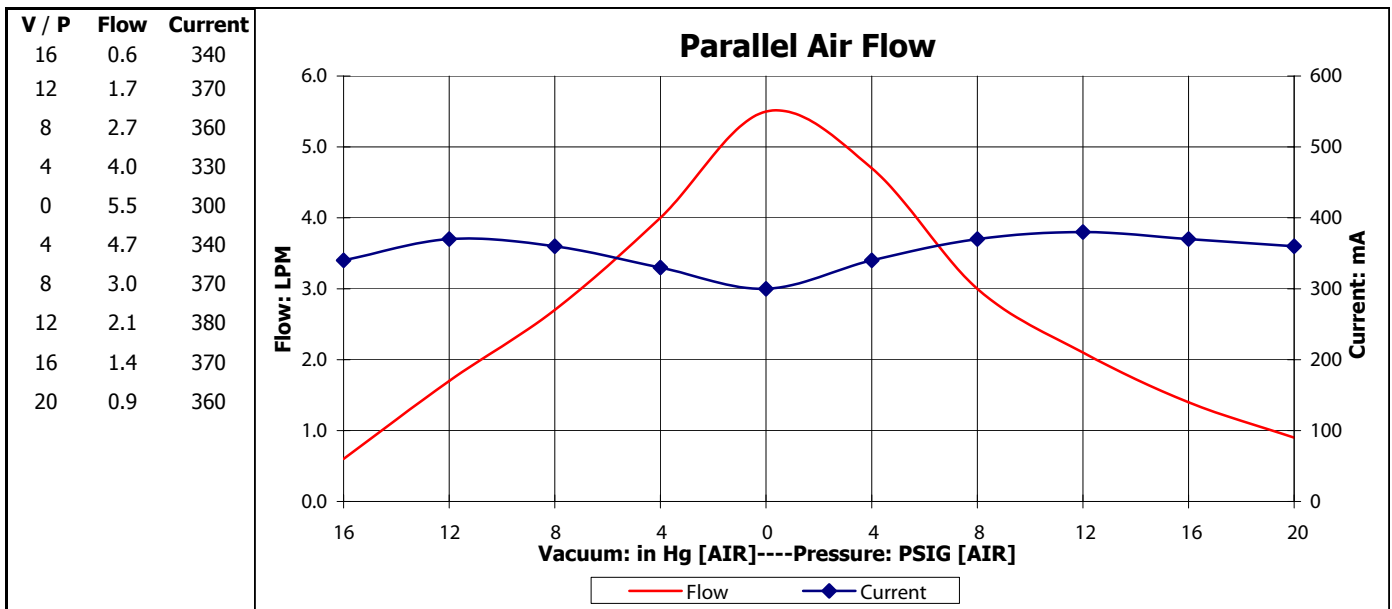
Part No.: **D716A-21-01**
 Model No.: **C.1F35G1.1F35N1.A24VDC**
 Description: **BTC-IIS Diaphragm Pump, Brushless Motor**

Dimensional Layout:



Specifications:

1. Wetted Materials:	Pump Head:	Vectra [LCP]	3. Electrical:	Motor:	Brushless Dual Bearing
	Retainer Washer:	2024 Alum [800/800]		Operating Voltage:	24.0 VDC
	Retainer Screw:	316 Stainless		In-rush Current:	5 x Operating Current for up to 50 ms
	Valves:	EPDM [Q55/Q55]		Recommended Fusing:	Slow Blow @ 2 x Operating Current
	Diaphragm:	AEPDM [F80/F80]			
	Gasket:	EPDM [65]			
2. Performance:			4. Other:	Temperature Range:	5 - 50° C
	- Vacuum: in Hg [AIR]	Parallel:		<u>Continuous</u> 18.0 <u>Maximum</u> 18.0	Free Flow RPM:
			5. Operating Limitations:	Eccentric:	A475/A475
- Pressure: PSIG [AIR]	Parallel:	22.0 22.0			Not configured for series operation



The above graph denotes nominal performance at 800' above sea level, 24°C, and at the specified voltage.

ST