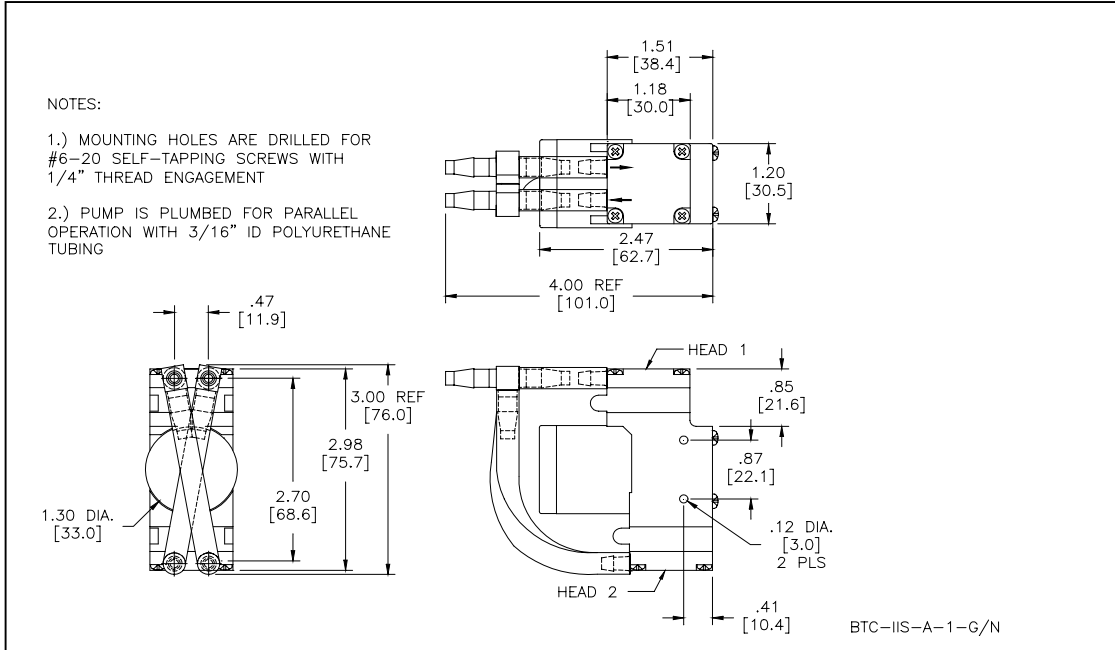




Mooresville, North Carolina 28117
 T: 704-662-3500 F: 704-662-8744
 www.hargraveshfluidics.com

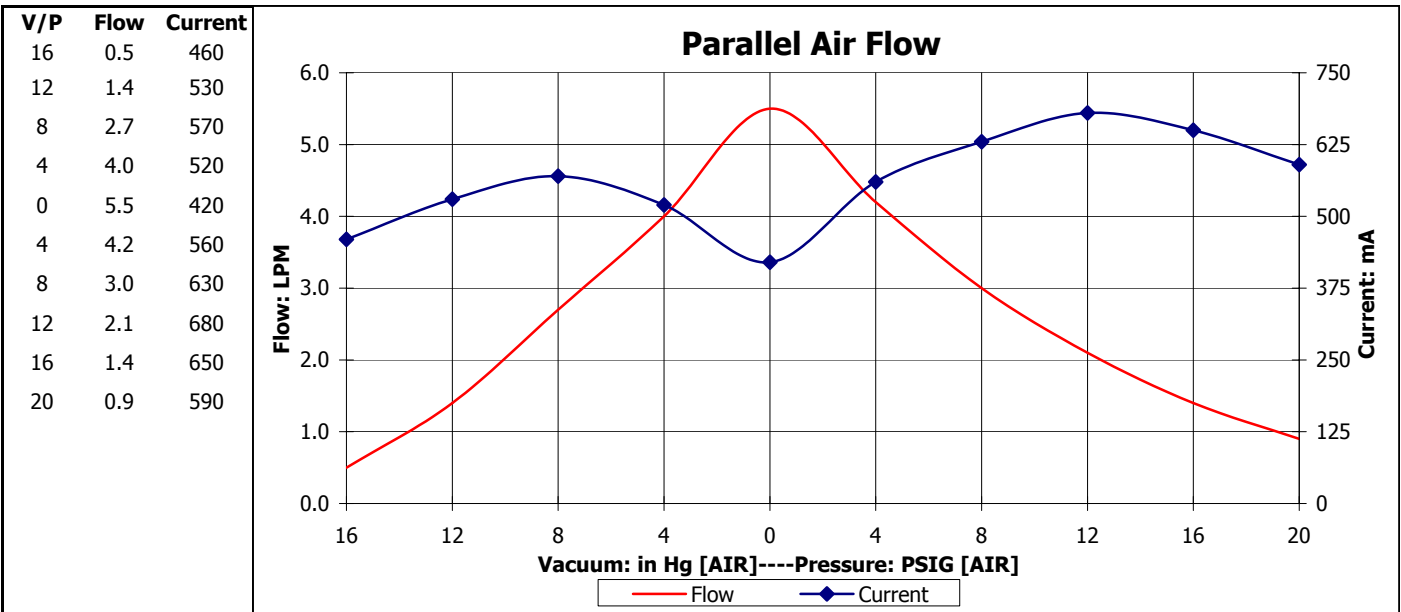
Part No.: **D713-21-01**
 Model No.: **C.1F35G1.1F35N1.A12VDC**
 Description: **BTC-IIS Diaphragm Pump, Brushless Motor**

Dimensional Layout:



Specifications:

1. Wetted Materials:	Pump Head:	Vectra [LCP]	3. Electrical:	Motor:	Brushless Dual Bearing		
	Retainer Washer:	2024 Alum [800/800]		Operating Voltage:	12.0 VDC		
	Retainer Screw:	316 Stainless		In-rush Current:	5 x Operating Current for up to 50 ms		
	Valves:	EPDM [Q55/Q55]		Recommended Fusing:	Slow Blow @ 2 x Operating Current		
	Diaphragm:	AEPDM [F80/F80]					
Gasket:	EPDM [65]						
2. Performance:		<u>Continuous</u>	<u>Maximum</u>	4. Other:	Temperature Range:	5 - 50° C	
	- Vacuum: in Hg [AIR]	Parallel	16.0		16.0	Free Flow RPM:	3800
	- Pressure: PSIG [AIR]	Parallel	20.0		20.0	Eccentric:	A475/A475
				5. Operating Limitations:	Not configured for series operation		



The above graph denotes nominal performance at 800' above sea level, 24°C, and at the specified voltage.

ST